



FEATURES

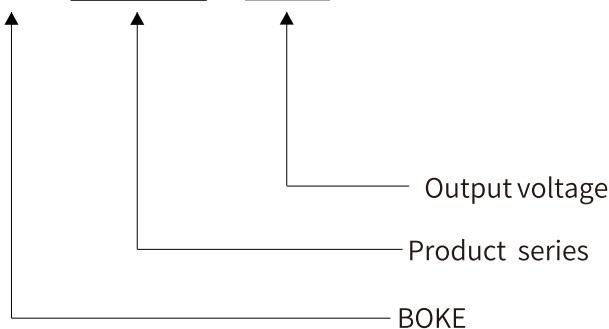
- Constant voltage output design, flicker-free
- 220-240V voltage input
- High efficiency, THD <10, PF> 0.95
- For luminaires of protection class I and protection class II
- Turn on delay time less than 0.5s
- Screwless terminal design, convenient for fast connection
- Simply add accessories for flexible use in independent applications
- Linear shape design, convenient for installation in groove and inside the linear light
- Suitable for constant voltage lights, such as strip lights, linear lights, etc.
- Lighting certification design, passed CE, ENEC, RCM, CCC certifications
- 5 years warranty

APPLICATION

- LED indoor lighting
- LED office lighting
- LED architectural lighting
- LED strip lighting

MODEL CODE

BOKE - HGVXXX - XXXX



ELECTRICAL SPECIFICATION

MODEL	BK-HGV022-12V0	BK-HGV022-24V0	BK-HGV048-12V0	BK-HGV048-24V0	
OUTPUT					
Output voltage range	12V	24V	12V	24V	
Output current	1.8A	0.9A	4A	2A	
Output power	21.6W Max.	21.6W Max.	48W Max.	48W Max.	
Voltage ripple & noise(note.2)	≤350mV(Vpp)	≤350mV(Vpp)	≤350mV(Vpp)	≤350mV(Vpp)	
Voltage & current accuracy	±5%	±5%	±5%	±5%	
Linear regulation	±5%	±5%	±5%	±5%	
Load regulation	±5%	±5%	±5%	±5%	
INPUT					
Rated input voltage	220-240VAC				
Input voltage range	180-264VAC				
Frequency range	47-63Hz				
Power factor	≤0.5(230VAC & full load)		PF>0.95(230VAC & full load);PF>0.90(230VAC & full load>50%)		
Total harmonic distortion	NA		THD<10%(230VAC & full load);THD<20%(230VAC & full load>50%)		
Efficiency(Typ.)	87%	88%	87%	89%	
Standby power (note.2)	<0.5W				
Input current	<0.3A		<0.4A		
Inrush current(cold start)	See data table for details				
Max. drivers under the MCB	See data table for details				
Power on delay	<0.5s				
PROTECTION					
Short circuit	Hiccup,recovers automatically after environment temperature declines				
OCP	≤4A	≤2A	≤8A	≤4A	
OVP	≤16Vdc	≤35Vdc	≤16Vdc	≤35Vdc	
ENVIRONMENT					
Operation temperature	-20-60°C		-20-50°C		
Operation humidity	10-90% RH,non-condensing				
Storage temperature/humidity	-25-80°C,5-95% RH,non-condensing				
IP class	IP20				
Vibration	10~500Hz,5G 12min./1cycle,period for 72min. each along X,Y,Z axes				
Tc (note.3)	Tc=90°C(Ta=60°C)		Tc=90°C(Ta=50°C)		
MTBF	500000H,MIL-HDBK-217F(25°C)				
Life time	See life time curve table for details				
Environmental protection	RoHS				
EMC					
EMC emission (note.4)	EN55015,GB17743,EN61000-3-2 Class C,EN61000-3-3				
EMC immunity	EN61000-4-2,3,4,5,6,8,11,EN61547				
SAFETY					
Safety standards	EN61347-1/2-13,GB19510.1/14,EN62384				
Flicker-free standard	IEEE1789:2015				
Certificate	TUV-CE ENEC RCM				
Withstand voltage	I/P-O/P:3750VAC,I/P-FG:1750VAC,O/P-FG:500VAC				
Surge	DM 2KV CM 2KV				
Leakage current	<0.7mA @ 240Vac				
Isolation resistance	I/P-O/P:100MΩ/500Vdc/25°C/70% RH				

NOTE

- 1.All parameter are measured at 230VAC input, rated load and 25°C of ambient temperature.
- 2.Ripple & Noise are measured at 20MHz of bandwidth by using a 12" twisted pair-wire terminated with a 0.1uF & 47uF parallel capacitor.
- 3.If this driver used for led lighting, the tc should not higher than tc showed on the driver when the lighting working on the highest working temperature.
- 4.The driver is considers as a component that will be operated in combination with final equipment,since EMC performance will be affected by the complete installation the final equipment manufactures must re-quality EMC directive on the complete installation again.

ELECTRICAL SPECIFICATION

MODEL	BK-HGV060-12V0	BK-HGV060-24V0	BK-HGV072-12V0	BK-HGV072-24V0	
OUTPUT					
Output voltage range	12V	24V	12V	24V	
Output current	5A	2.5A	6A	3A	
Output power	60W Max.	60W Max.	72W Max.	72W Max.	
Voltage ripple & noise(note.2)	≤350mV(Vpp)	≤350mV(Vpp)	≤350mV(Vpp)	≤350mV(Vpp)	
Voltage & current accuracy	±5%	±5%	±5%	±5%	
Linear regulation	±5%	±5%	±5%	±5%	
Load regulation	±5%	±5%	±5%	±5%	
INPUT					
Rated input voltage	220-240VAC				
Input voltage range	180-264VAC				
Frequency range	47-63Hz				
Power factor	≤0.5(230VAC & full load)		PF>0.95(230VAC & full load);PF>0.90(230VAC & full load>50%)		
Total harmonic distortion	NA		THD<10%(230VAC & full load);THD<20%(230VAC & full load>50%)		
Efficiency(Typ.)	87%	89%	89%	90%	
Standby power (note.2)	<0.5W				
Input current	<0.45A		<0.5A		
Inrush current(cold start)	See data table for details				
Max. drivers under the MCB	See data table for details				
Power on delay	<0.5s				
PROTECTION					
Short circuit	Hiccup,recovers automatically after environment temperature declines				
OCP	≤8A	≤4.5A	≤8A	≤4.5A	
OVP	≤16Vdc	≤35Vdc	≤16Vdc	≤35Vdc	
ENVIRONMENT					
Operation temperature	-20-50°C				
Operation humidity	10-90% RH,non-condensing				
Storage temperature/humidity	-25-80°C,5-95% RH,non-condensing				
IP class	IP20				
Vibration	10~500Hz,5G 12min./1cycle,period for 72min. each along X,Y,Z axes				
Tc (note.3)	Tc=90°C(Ta=50°C)				
MTBF	500000H,MIL-HDBK-217F(25°C)				
Life time	See life time curve table for details				
Environmental protection	RoHS				
EMC					
EMC emission (note.4)	EN55015,GB17743,EN61000-3-2 Class C,EN61000-3-3				
EMC immunity	EN61000-4-2,3,4,5,6,8,11,EN61547				
SAFETY					
Safety standards	EN61347-1/2-13,GB19510.1/14,EN62384				
Flicker-free standard	IEEE1789:2015				
Certificate	TUV-CE ENEC RCM				
Withstand voltage	I/P-O/P:3750VAC,I/P-FG:1750VAC,O/P-FG:500VAC				
Surge	DM 2KV CM 2KV				
Leakage current	<0.7mA @ 240Vac				
Isolation resistance	I/P-O/P:100MΩ/500Vdc/25°C/70% RH				

NOTE

- 1.All parameter are measured at 230VAC input, rated load and 25°C of ambient temperature.
- 2.Ripple & Noise are measured at 20MHz of bandwidth by using a 12" twisted pair-wire terminated with a 0.1uF & 47uF paralld capacitor.
- 3.If this driver used for led lighting, the tc should not higher than tc showed on the driver when the lighting working on the highest working temperture.
- 4.The driver is considers as a compent that wil be operated in combination with final equipment,since EMC performance will be affected by the complete installation the final equipment manufactures must re-quality EMC direcive on the complete installation again.

ELECTRICAL SPECIFICATION

MODEL	BK-HGV100-24V0	BK-HGV100-48V0	BK-HGV150-24V0	BK-HGV150-48V0	BK-HGV070-48V0	
OUTPUT						
Output voltage range	24V	48V	24V	48V	48V	
Output current	4A	2A	6A	3A	1.5A	
Output power	96W Max.	96W Max.	144W Max.	144W Max.	72W Max.	
Voltage ripple & noise(note.2)	≤350mV(Vpp)	≤350mV(Vpp)	≤350mV(Vpp)	≤350mV(Vpp)	≤350mV(Vpp)	
Voltage & current accuracy	±5%	±5%	±5%	±5%	±5%	
Linear regulation	±5%	±5%	±5%	±5%	±150mA	
Load regulation	±5%	±5%	±5%	±5%	±30mA	
INPUT						
Rated input voltage	220-240VAC					
Input voltage range	180-264VAC					
Frequency range	47-63Hz					
Power factor	≤0.5(230VAC & full load)		PF>0.95(230VAC & full load);PF>0.90(230VAC & full load>50%)			
Total harmonic distortion	NA		THD<10%(230VAC & full load);THD<20%(230VAC & full load>50%)			
Efficiency(Typ.)	89%		90%		89%	
Standby power (note.2)	<0.5W					
Input current	<0.8A		<1A		<0.5A	
Inrush current(cold start)	See data table for details					
Max. drivers under the MCB	See data table for details					
Power on delay	<0.5s					
PROTECTION						
Short circuit	Hiccup,recovers automatically after environment temperature declines					
OC	≤5.8A	≤10.5A	≤8A	≤4A	≤2.2A	
OVP	≤35Vdc	≤63Vdc	≤28Vdc	≤55Vdc	≤63Vdc	
ENVIROHMENT						
Operation temperature	-20-50°C					
Operation humidity	10-90% RH,non-condensing				-20-60°C	
Storage tempera-ture/humidity	-25-80°C,5-95% RH,non-condensing					
IP class	IP20					
Vibration	10~500Hz,5G 12min./1cycle,period for 72min. each along X,Y,Z axes					
Tc (note.3)	Tc=90°C(Ta=50°C)				Tc=90°C(Ta=60°C)	
MTBF	500000H,MIL-HDBK-217F(25°C)					
Life time	See life time curve table for details					
Environmental protection	RoHS					
EMC						
EMC emisson (note.4)	EN55015,GB17743,EN61000-3-2 Class C,EN61000-3-3					
EMC immunity	EN61000-4-2,3,4,5,6,8,11,EN61547					
SAFETY						
Safety standards	EN61347-1/2-13,GB19510.1/14,EN62384					
Flicker-free standard	IEEE1789:2015					
Certificate	TUV-CE ENEC RCM					
Withstand voltage	I/P-O/P:3750VAC,I/P-FG:1750VAC,O/P-FG:500VAC					
Surge	DM 2KV CM 2KV					
Leakage current	<0.7mA @ 240Vac					
Isolation resis-tance	I/P-O/P:100MΩ/500Vdc/25°C/70% RH					

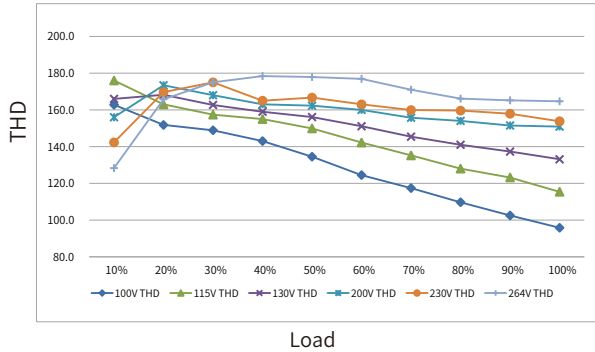
NOTE

- 1.All parameter are measured at 230VAC input, rated load and 25°C of ambient temperature.
- 2.Ripple & Noise are measured at 20MHz of bandwith by using a 12" twisted pair-wire terminated with a 0.1uF & 47uF paralld capacitor.
- 3.If this driver used for led lighting, the tc should not higher than tc showed on the driver when the lighting working on the highest working temperture.
- 4.The driver is considers as a compent that wil be operated in combination with final equipment,since EMC performance will be affected by the complete installation the final equipment mancfatures must re-quality EMC direcive on the complete installation again.

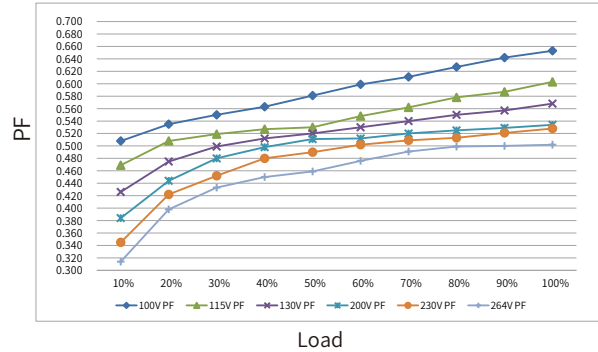
Electrical characteristics

BK-HGV022-24V0 Electrical characteristics

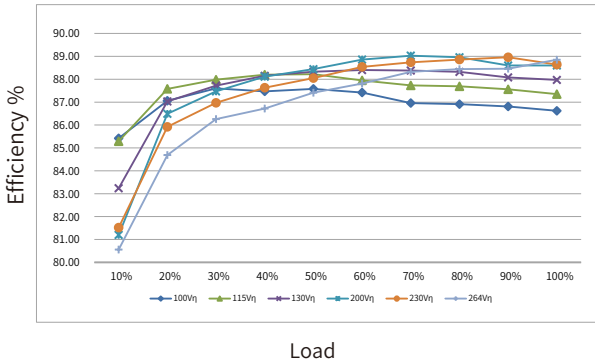
THD vs. Load



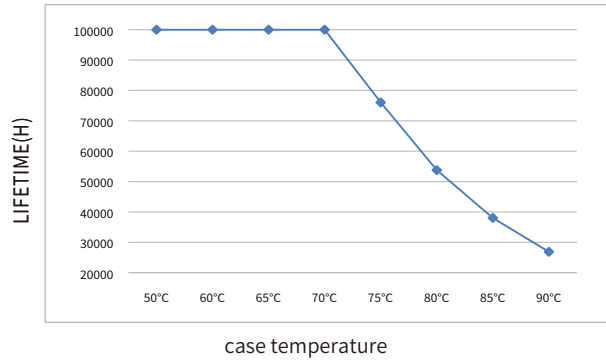
Power factor vs. Load



Efficiency vs. Load

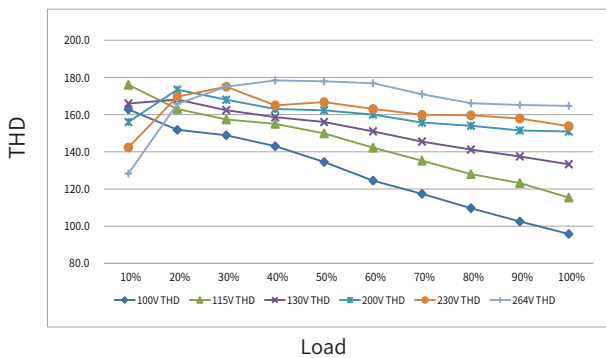


Lifetime vs. case temperature

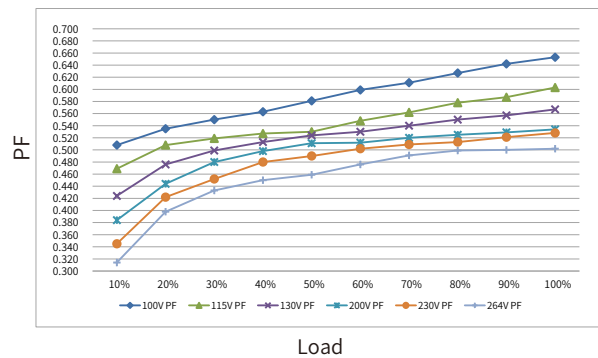


BK-HGV022-12V0 Electrical characteristics

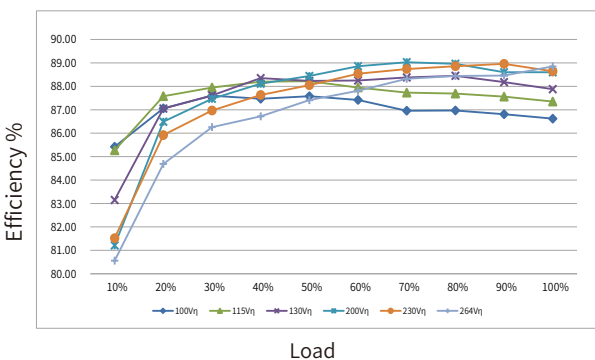
THD vs. Load



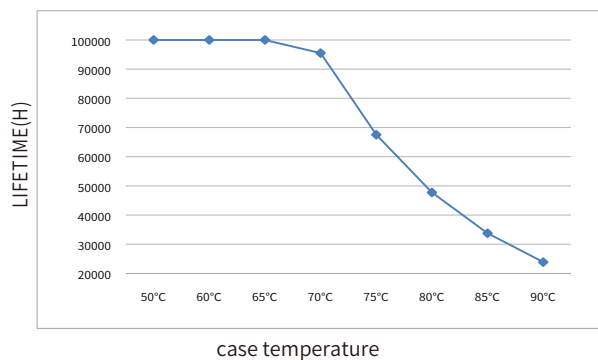
Power factor vs. Load



Efficiency vs. Load



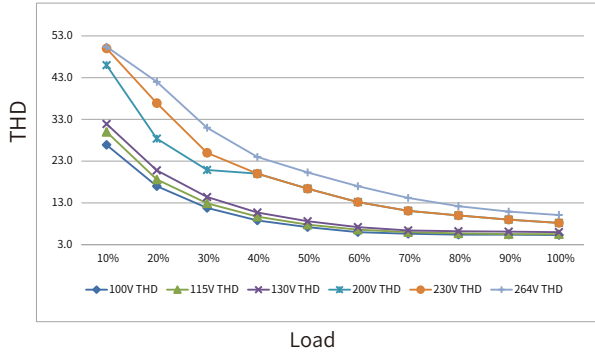
Lifetime vs. case temperature



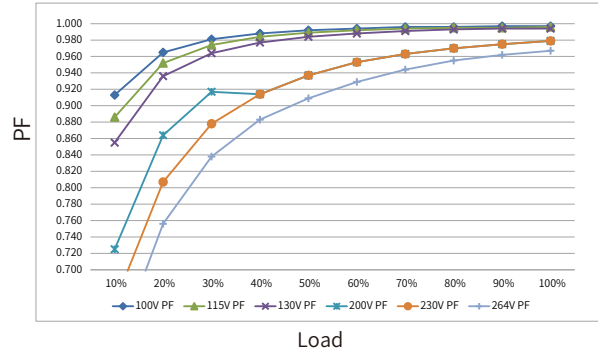
Electrical characteristics

BK-HGV048-24V0 Electrical characteristics

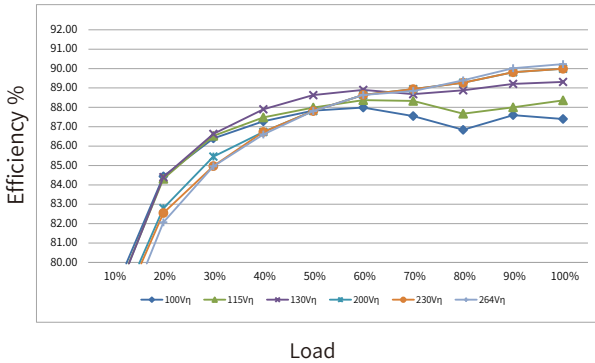
THD vs. Load



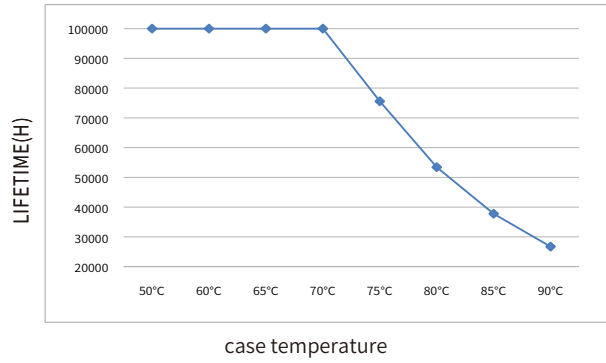
Power factor vs. Load



Efficiency vs. Load

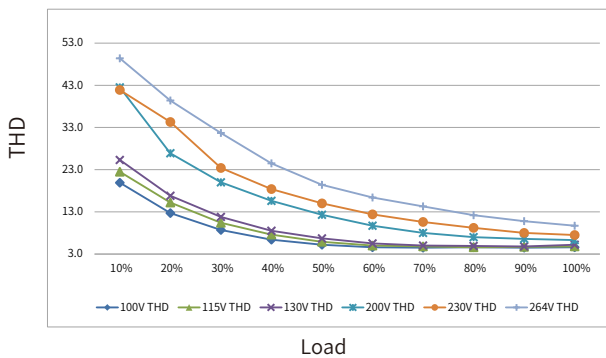


Lifetime vs. case temperature

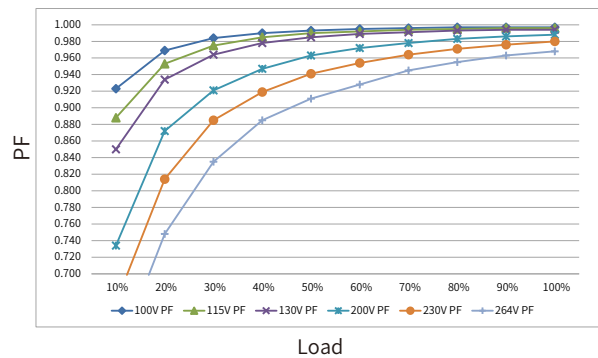


BK-HGV048-12V0 Electrical characteristics

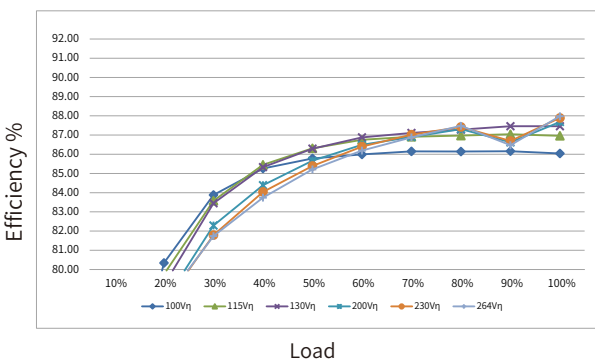
THD vs. Load



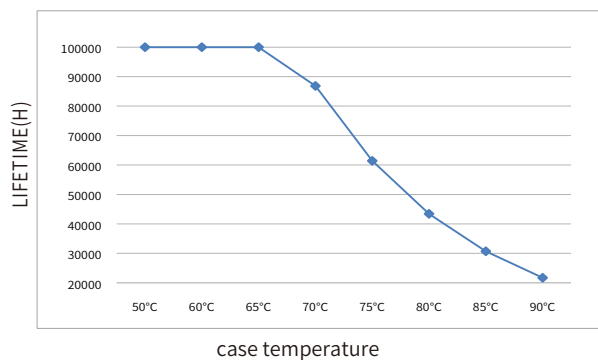
Power factor vs. Load



Efficiency vs. Load



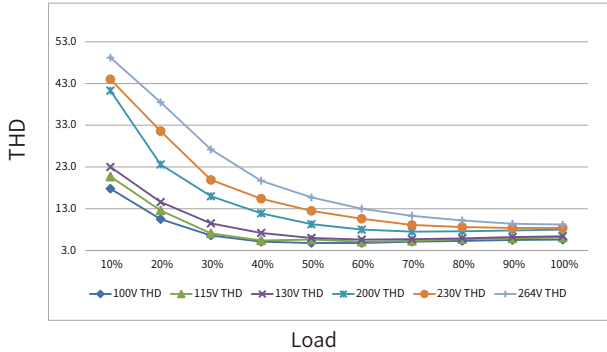
Lifetime vs. case temperature



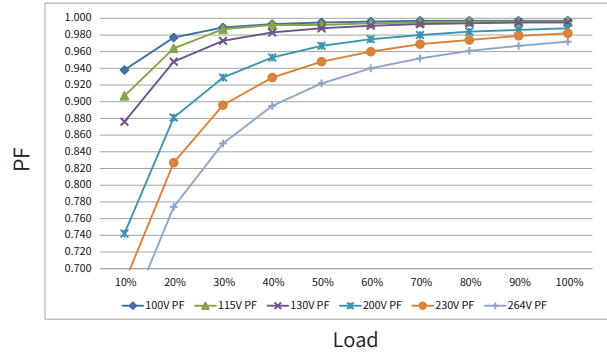
Electrical characteristics

BK-HGV060-24V0 Electrical characteristics

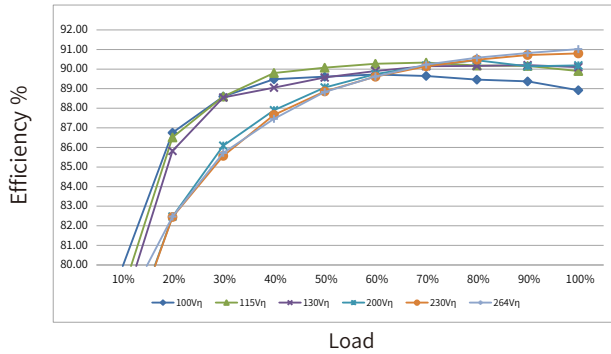
THD vs. Load



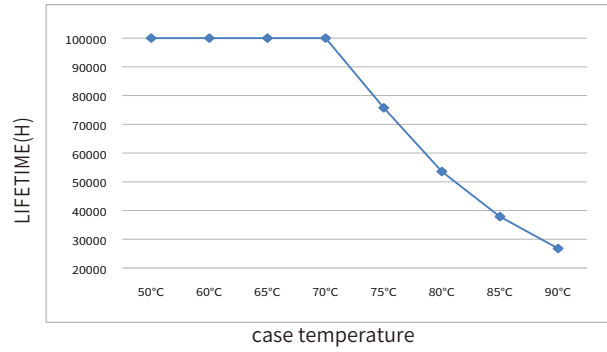
Power factor vs. Load



Efficiency vs. Load

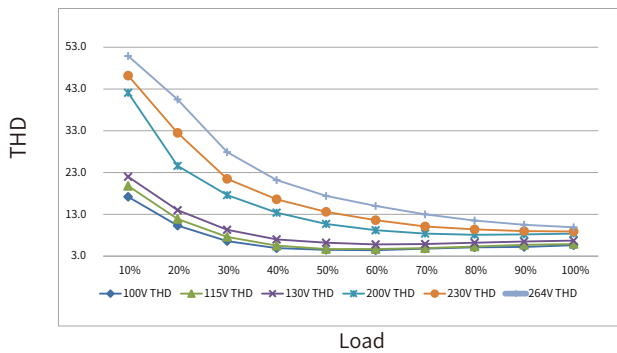


Lifetime vs. case temperature

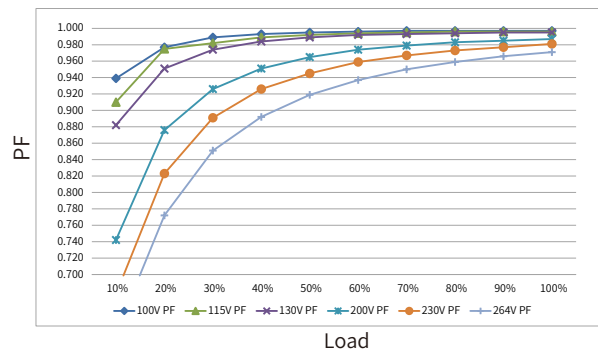


BK-HGV060-12V0 Electrical characteristics

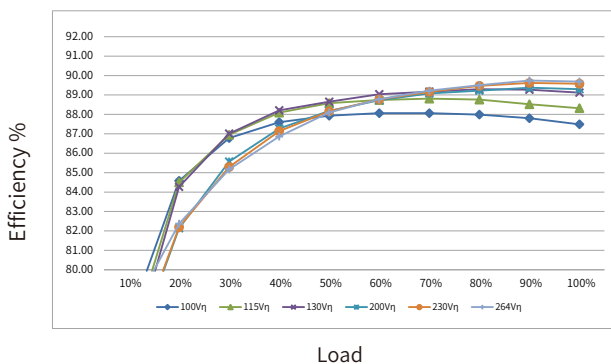
THD vs. Load



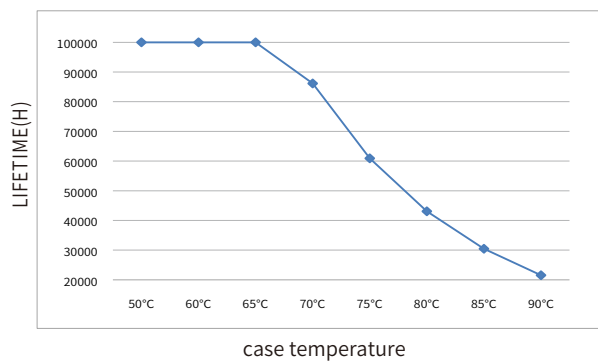
Power factor vs. Load



Efficiency vs. Load



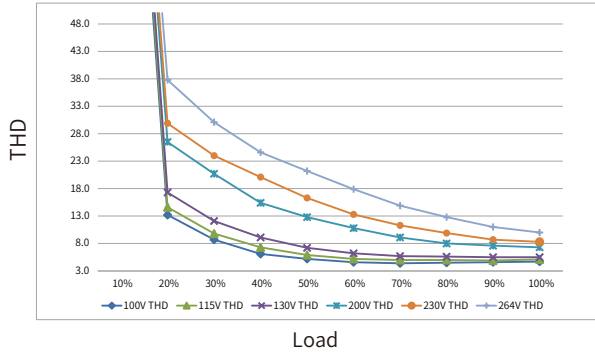
Lifetime vs. case temperature



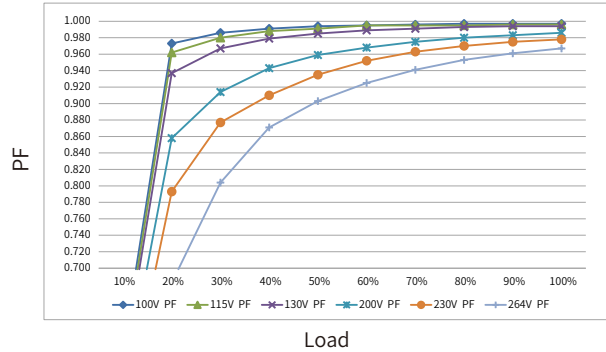
Electrical characteristics

BK-HGV072-24V0 Electrical characteristics

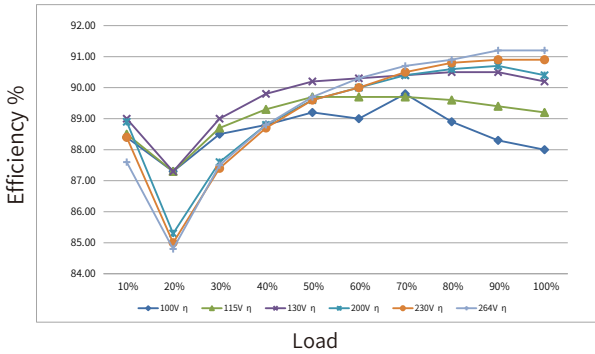
THD vs. Load



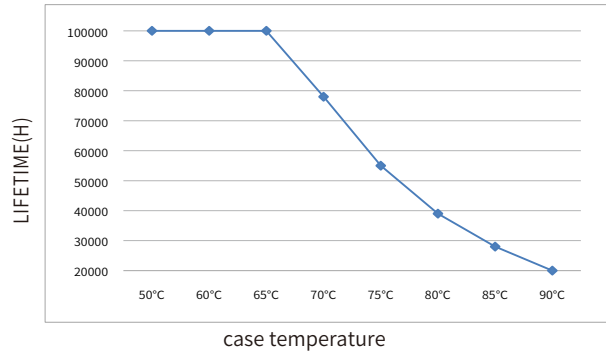
Power factor vs. Load



Efficiency vs. Load

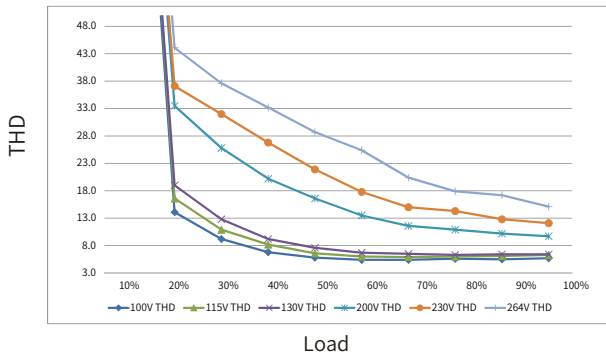


Lifetime vs. case temperature

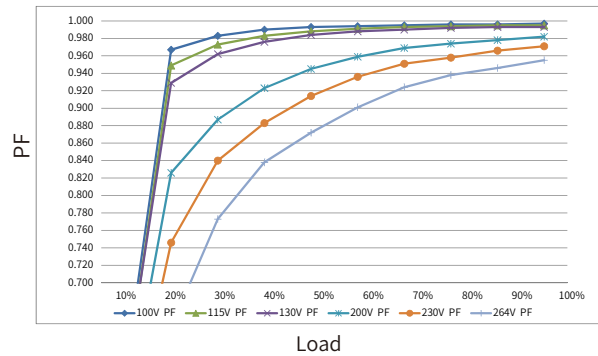


BK-HGV072-12V0 Electrical characteristics

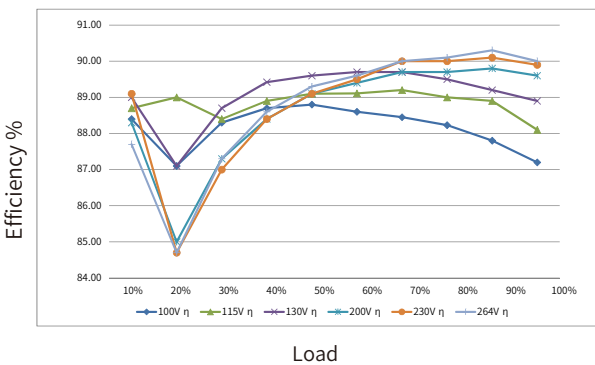
THD vs. Load



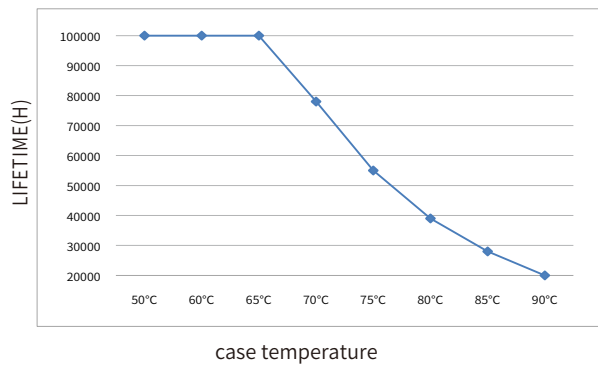
Power factor vs. Load



Efficiency vs. Load



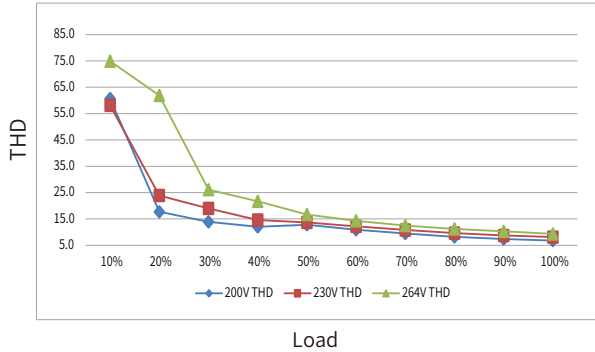
Lifetime vs. case temperature



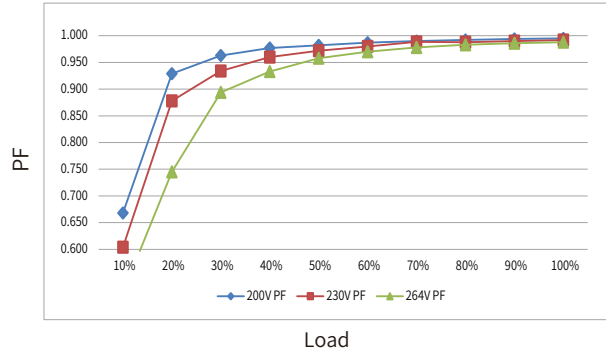
Electrical characteristics

BK-HGV100-48V0 Electrical characteristics

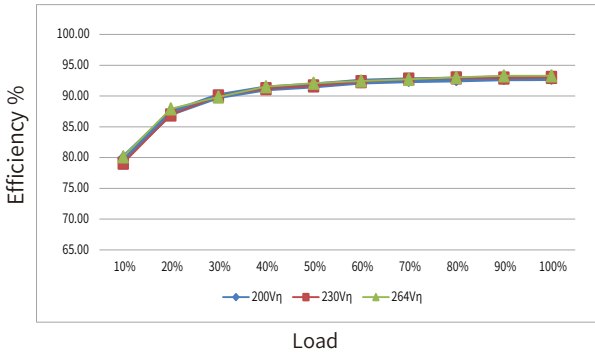
THD vs. Load



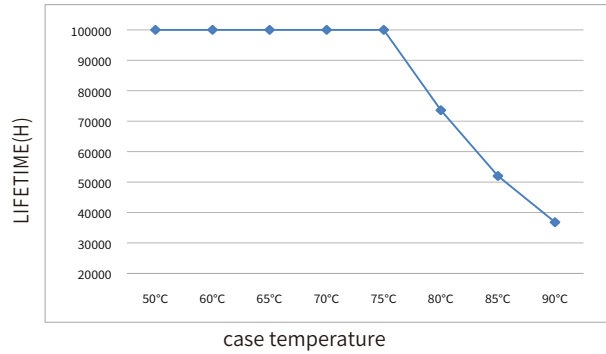
Power factor vs. Load



Efficiency vs. Load

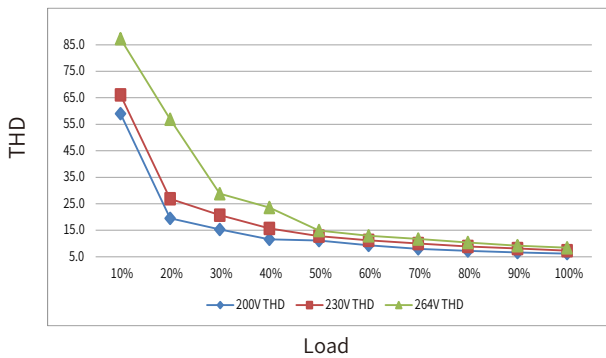


Lifetime vs. case temperature

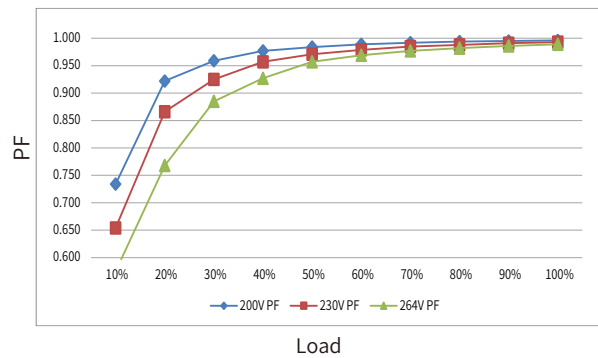


BK-HGV100-24V0 Electrical characteristics

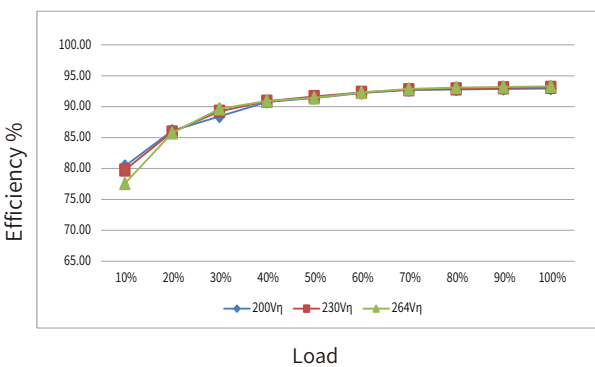
THD vs. Load



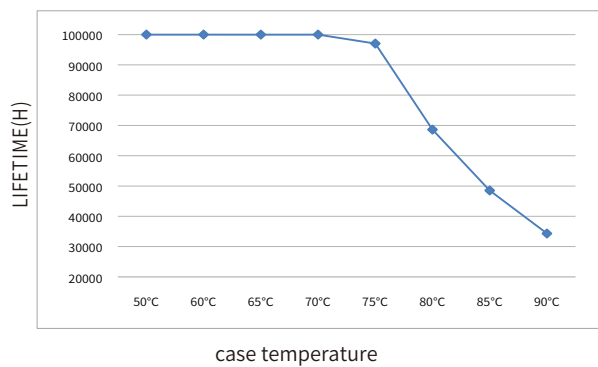
Power factor vs. Load



Efficiency vs. Load



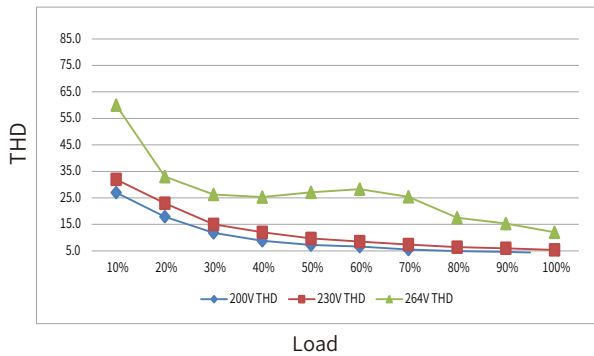
Lifetime vs. case temperature



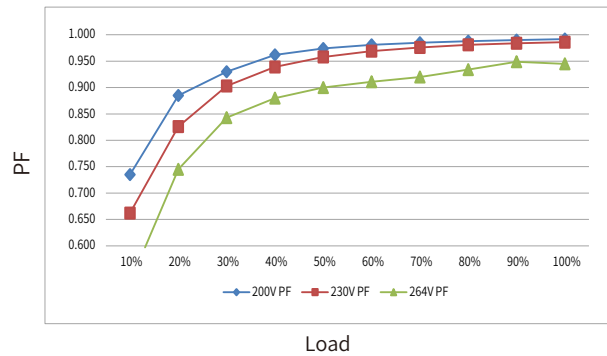
Electrical characteristics

BK-HGV150-48V0 Electrical characteristics

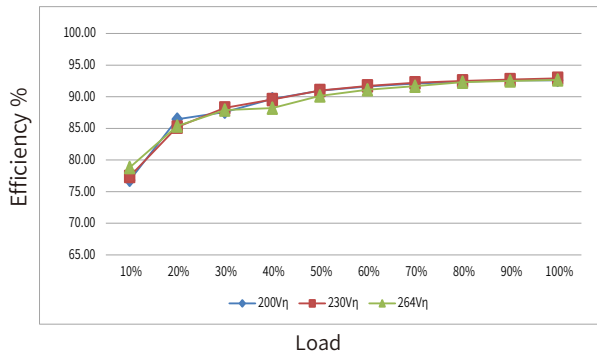
THD vs. Load



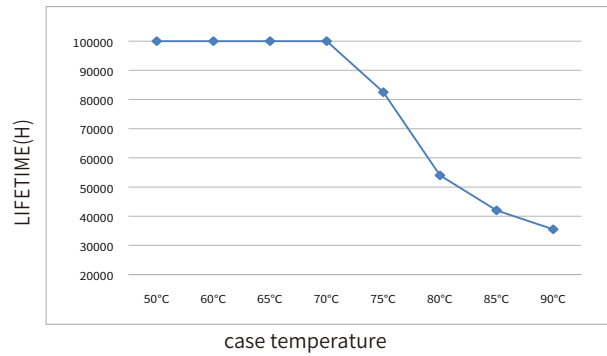
Power factor vs. Load



Efficiency vs. Load

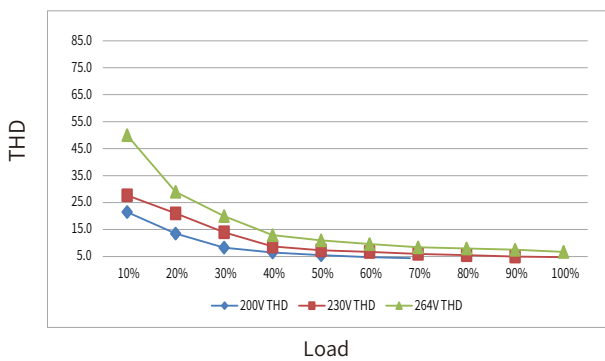


Lifetime vs. case temperature

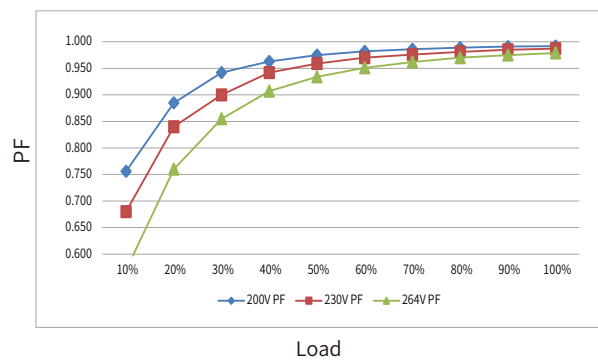


BK-HGV100-24V0 Electrical characteristics

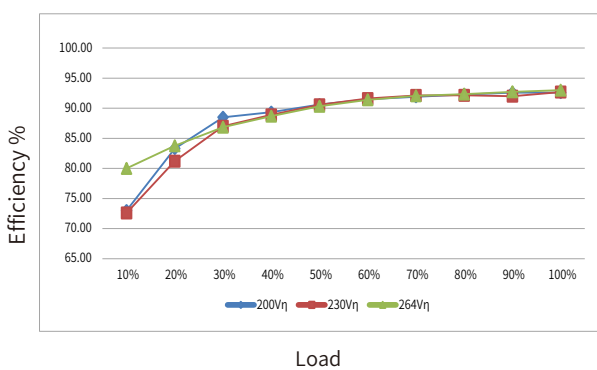
THD vs. Load



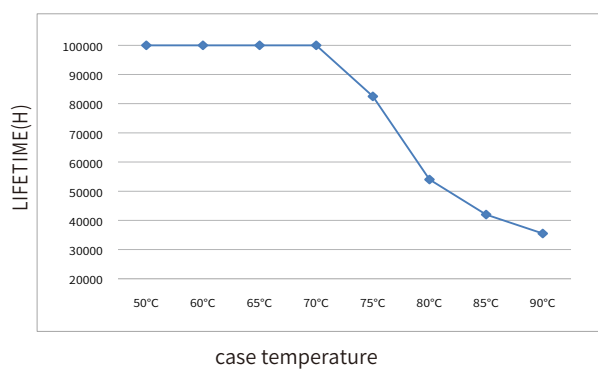
Power factor vs. Load



Efficiency vs. Load



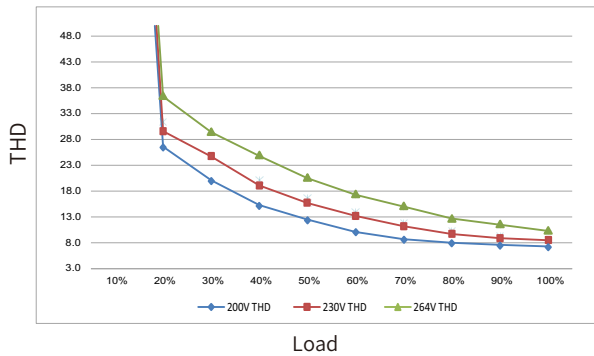
Lifetime vs. case temperature



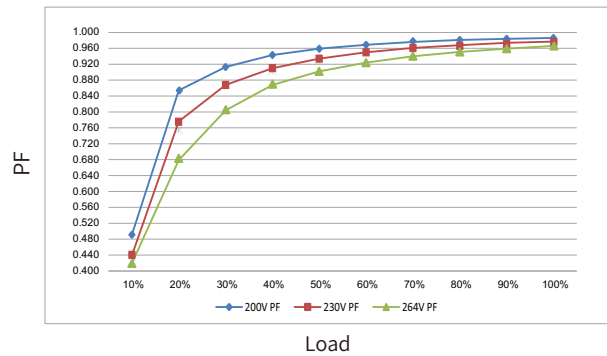
Electrical characteristics

BK-HGV070-48V0 Electrical characteristics

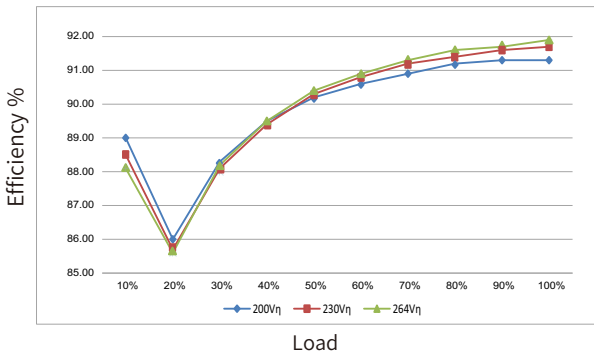
THD vs. Load



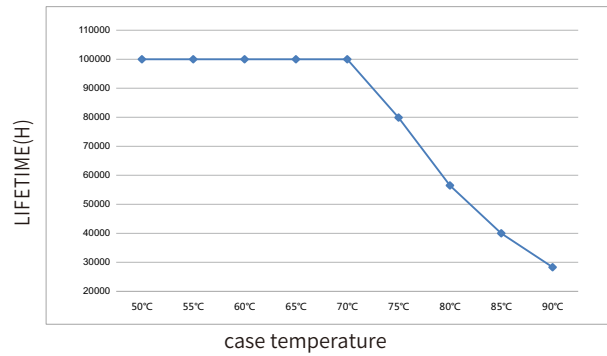
Power factor vs. Load



Efficiency vs. Load



Lifetime vs. case temperature



Label

BK-HGV022-12V0

INPUT AC-L AC-N NC	BOKE DONGGUAN BOKE LED DRIVERS CO.,LTD Address: Building H, Julong Industrial Park, Meitang Community, Huangjiang Town, 523763 Dongguan, CHINA For LED modules use only MADE IN CHINA 中國製造	LED Driver LED 控制裝置 MODEL: BK-HGV022-12V0 INPUT: 220-240V ~ 0.3A Max. 50/60Hz Pin: 24.5W (typ.) λ: 0.5 OUTPUT: 12V 1.8A 21.6W Max. INPUT: 100-240V ~ 0.5A Max. 50/60Hz Pin: 25W (typ.) λ: 0.5 OUTPUT: 12V 1.8A 21.6W Max.	CE, RoHS, SELV, RoHS, C.V. 恒壓	OUTPUT V- V+ V+
------------------------------------	---	--	---------------------------------	---------------------------------

BK-HGV022-24V0

INPUT AC-L AC-N NC	BOKE DONGGUAN BOKE LED DRIVERS CO.,LTD Address: Building H, Julong Industrial Park, Meitang Community, Huangjiang Town, 523763 Dongguan, CHINA For LED modules use only MADE IN CHINA 中國製造	LED Driver LED 控制裝置 MODEL: BK-HGV022-24V0 INPUT: 220-240V ~ 0.3A Max. 50/60Hz Pin: 24.5W (typ.) λ: 0.5 OUTPUT: 24V 0.9A 21.6W Max. INPUT: 100-240V ~ 0.5A Max. 50/60Hz Pin: 25W (typ.) λ: 0.5 OUTPUT: 24V 0.9A 21.6W Max.	CE, RoHS, SELV, RoHS, C.V. 恒壓	OUTPUT V- V+ V+
------------------------------------	---	--	---------------------------------	---------------------------------

BK-HGV048-12V0

INPUT AC-L AC-N NC	BOKE DONGGUAN BOKE LED DRIVERS CO.,LTD Address: Building H, Julong Industrial Park, Meitang Community, Huangjiang Town, 523763 Dongguan, CHINA For LED modules use only MADE IN CHINA 中國製造	LED Driver LED 控制裝置 MODEL: BK-HGV048-12V0 INPUT: 220-240V ~ 0.4A Max. 50/60Hz Pin: 56W (typ.) λ: 0.95 OUTPUT: 12V 4A 48W Max. INPUT: 100-240V ~ 0.6A Max. 50/60Hz Pin: 42W (typ.) λ: 0.95 OUTPUT: 12V 3A 36W Max.	CE, RoHS, SELV, RoHS, C.V. 恒壓	OUTPUT V- V+ V+
------------------------------------	---	--	---------------------------------	---------------------------------

BK-HGV048-24V0

INPUT AC-L AC-N NC	BOKE DONGGUAN BOKE LED DRIVERS CO.,LTD Address: Building H, Julong Industrial Park, Meitang Community, Huangjiang Town, 523763 Dongguan, CHINA For LED modules use only MADE IN CHINA 中國製造	LED Driver LED 控制裝置 MODEL: BK-HGV048-24V0 INPUT: 220-240V ~ 0.4A Max. 50/60Hz Pin: 56W (typ.) λ: 0.95 OUTPUT: 24V 2A 48W Max. INPUT: 100-240V ~ 0.6A Max. 50/60Hz Pin: 42W (typ.) λ: 0.95 OUTPUT: 24V 1.5A 36W Max.	CE, RoHS, SELV, RoHS, C.V. 恒壓	OUTPUT V- V+ V+
------------------------------------	---	--	---------------------------------	---------------------------------

Label

BK-HGV060-12V0

INPUT AC-L AC-N NC PRI wire prep. 0.75-1.5mm ² 	 DONGGUAN BOKE LED DRIVERS CO.,LTD Address: Building H, Julong Industrial Park, Meitang Community, Huangjiang Town, 523763 Dongguan, CHINA For LED modules use only MADE IN CHINA 中国制造	LED Driver LED 控制装置 MODEL: BK-HGV060-12V0 INPUT: 220-240V ~ 0.45A Max. 50/60Hz Pin:70W (typ.) λ:0.95 OUTPUT: 12V 5A 60W Max. INPUT: 100-240V ~ 0.74A Max. 50/60Hz Pin:56W (typ.) λ:0.95 OUTPUT: 12V 4A 48W Max. C.V. 恒压	tc:90°C ta:50°C 	OUTPUT SEC wire prep. 0.75-2.5mm ² V- V- V+ V+
		*tc 		

BK-HGV060-24V0

INPUT AC-L AC-N NC PRI wire prep. 0.75-1.5mm ² 	 DONGGUAN BOKE LED DRIVERS CO.,LTD Address: Building H, Julong Industrial Park, Meitang Community, Huangjiang Town, 523763 Dongguan, CHINA For LED modules use only MADE IN CHINA 中国制造	LED Driver LED 控制装置 MODEL: BK-HGV060-24V0 INPUT: 220-240V ~ 0.45A Max. 50/60Hz Pin:70W (typ.) λ:0.95 OUTPUT: 24V 2.5A 60W Max. INPUT: 100-240V ~ 0.74A Max. 50/60Hz Pin:56W (typ.) λ:0.95 OUTPUT: 24V 2A 48W Max. C.V. 恒压	tc:90°C ta:50°C 	OUTPUT SEC wire prep. 0.75-2.5mm ² V- V- V+ V+
		*tc 		

BK-HGV072-12V0

INPUT AC-L AC-N NC PRI wire prep. 0.75-1.5mm ² 	 DONGGUAN BOKE LED DRIVERS CO.,LTD Address: Building H, Julong Industrial Park, Meitang Community, Huangjiang Town, 523763 Dongguan, CHINA For LED modules use only MADE IN CHINA 中国制造	LED Driver LED 控制装置 MODEL: BK-HGV072-12V0 INPUT: 220-240V ~ 0.5A Max. 50/60Hz Pin:85W (typ.) λ:0.95 OUTPUT: 12V 3A 72W Max. INPUT: 100-240V ~ 0.75A Max. 50/60Hz Pin:70W (typ.) λ:0.95 OUTPUT: 12V 5A 60W Max. C.V. 恒压	tc:90°C ta:50°C 	OUTPUT SEC wire prep. 0.75-2.5mm ² V- V- V+ V+
		*tc 		

BK-HGV072-24V0

INPUT AC-L AC-N NC PRI wire prep. 0.75-1.5mm ² 	 DONGGUAN BOKE LED DRIVERS CO.,LTD Address: Building H, Julong Industrial Park, Meitang Community, Huangjiang Town, 523763 Dongguan, CHINA For LED modules use only MADE IN CHINA 中国制造	LED Driver LED 控制装置 MODEL: BK-HGV072-24V0 INPUT: 220-240V ~ 0.5A Max. 50/60Hz Pin:85W (typ.) λ:0.95 OUTPUT: 24V 3A 72W Max. INPUT: 100-240V ~ 0.75A Max. 50/60Hz Pin:70W (typ.) λ:0.95 OUTPUT: 24V 2.5A 60W Max. C.V. 恒压	tc:90°C ta:50°C 	OUTPUT SEC wire prep. 0.75-2.5mm ² V- V- V+ V+
		*tc 		

BK-HGV100-24V0

INPUT AC-L AC-N NC PRI wire prep. 0.75-1.5mm ² 	 DONGGUAN BOKE LED DRIVERS CO.,LTD Address: Building H, Julong Industrial Park, Meitang Community, Huangjiang Town, 523763 Dongguan, CHINA For LED modules use only MADE IN CHINA 中国制造	LED Driver LED 控制装置 C.V. 恒压 MODEL: BK-HGV100-48V0 INPUT: 220-240V ~ 0.8A Max. 50/60Hz Pin:109W (typ.) λ:0.95 OUTPUT: 48V 2A 96W Max. For LED modules use only MADE IN CHINA 中国制造	tc:90°C ta:50°C 	OUTPUT SEC wire prep. 1.5mm ² V- V- V+ V+
		*tc 		

BK-HGV100-48V0

INPUT AC-L AC-N NC PRI wire prep. 0.75-1.5mm ² 	 DONGGUAN BOKE LED DRIVERS CO.,LTD Address: Building H, Julong Industrial Park, Meitang Community, Huangjiang Town, 523763 Dongguan, CHINA For LED modules use only MADE IN CHINA 中国制造	LED Driver LED 控制装置 C.V. 恒压 MODEL: BK-HGV100-24V0 INPUT: 220-240V ~ 0.8A Max. 50/60Hz Pin:109W (typ.) λ:0.95 OUTPUT: 24V 4A 96W Max. For LED modules use only MADE IN CHINA 中国制造	tc:90°C ta:50°C 	OUTPUT SEC wire prep. 1.5mm ² V- V- V+ V+
		*tc 		

BK-HGV150-24V0

INPUT AC-L AC-N NC PRI wire prep. 0.75-1.5mm ² 	 DONGGUAN BOKE LED DRIVERS CO.,LTD Address: Building H, Julong Industrial Park, Meitang Community, Huangjiang Town, 523763 Dongguan, CHINA For LED modules use only MADE IN CHINA 中国制造	LED Driver LED 控制装置 C.V. 恒压 MODEL: BK-HGV150-24V0 INPUT: 220-240V ~ 1A Max. 50/60Hz Pin:160W (typ.) λ:0.95 OUTPUT: 24V 6A 144W Max. For LED modules use only MADE IN CHINA 中国制造	tc:90°C ta:50°C 	OUTPUT SEC wire prep. 1.5mm ² V+ V+ V- V-
		*tc 		

BK-HGV150-48V0

INPUT AC-L AC-N NC PRI wire prep. 0.75-1.5mm ² 	 DONGGUAN BOKE LED DRIVERS CO.,LTD Address: Building H, Julong Industrial Park, Meitang Community, Huangjiang Town, 523763 Dongguan, CHINA For LED modules use only MADE IN CHINA 中国制造	LED Driver LED 控制装置 C.V. 恒压 MODEL: BK-HGV150-48V0 INPUT: 220-240V ~ 1A Max. 50/60Hz Pin:160W (typ.) λ:0.95 OUTPUT: 48V 3A 144W Max. For LED modules use only MADE IN CHINA 中国制造	tc:90°C ta:50°C 	OUTPUT SEC wire prep. 1.5mm ² V+ V+ V- V-
		*tc 		

BK-HGV070-48V0

INPUT AC-L AC-N NC PRI wire prep. 0.75-1.5mm ² 	 www.powerboke.com DONGGUAN BOKE LED DRIVERS CO.,LTD Address: Building H, Julong Industrial Park, Meitang Community, Huangjiang Town, 523763 Dongguan, CHINA	Constant Voltage LED Driver For LED modules use only MODEL: BK-HGV070-48V0 INPUT: 200-240V ~ 0.5A Max. 50/60Hz Pin:80W (typ.) λ:0.95 OUTPUT: 48V 1.5A 72W Max.	*tc tc:90°C ta:60°C MADE IN CHINA 	OUTPUT SEC wire prep. 0.75-2.5mm ² V- V- V+ V+
		*tc 		

Surge curve

HGV022

Specification item	Value	unit	Condition
Inrush current Ipeak	25.75	A	Input voltage 230V
Inrush current Twidth	300	us	Input voltage 230V, width at 50% peak
Drivers/MCB 16A type B	≤7	PCS	

HGV060

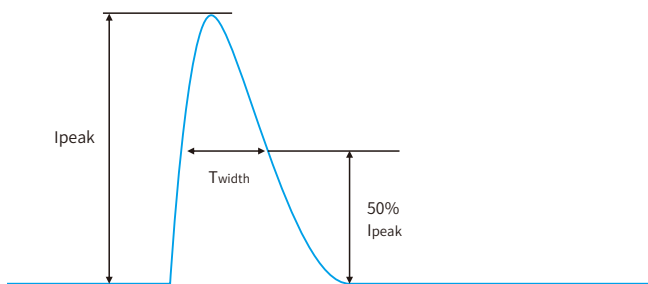
Specification item	Value	unit	Condition
Inrush current Ipeak	30	A	Input voltage 230V
Inrush current Twidth	300	us	Input voltage 230V, width at 50% peak
Drivers/MCB 16A type B	≤7	PCS	

HGV100

Specification item	Value	unit	Condition
Inrush current Ipeak	46	A	Input voltage 230V
Inrush current Twidth	280	us	Input voltage 230V, width at 50% peak
Drivers/MCB 16A type B	≤5	PCS	

HGV070

Specification item	Value	unit	Condition
Inrush current Ipeak	34	A	Input voltage 230V
Inrush current Twidth	360	us	Input voltage 230V, width at 50% peak
Drivers/MCB 16A type B	≤5	PCS	



HGV048

Specification item	Value	unit	Condition
Inrush current Ipeak	26.4	A	Input voltage 230V
Inrush current Twidth	300	us	Input voltage 230V, width at 50% peak
Drivers/MCB 16A type B	≤9	PCS	

HGV072

Specification item	Value	unit	Condition
Inrush current Ipeak	50	A	Input voltage 230V
Inrush current Twidth	970	us	Input voltage 230V, width at 50% peak
Drivers/MCB 16A type B	≤5	PCS	

HGV150

Specification item	Value	unit	Condition
Inrush current Ipeak	60	A	Input voltage 230V
Inrush current Twidth	485	us	Input voltage 230V, width at 50% peak
Drivers/MCB 16A type B	≤2	PCS	

MCB	Rating	Relative number of LED driver
B	10A	63%
B	13A	81%
B	16A	100%(stated in datasheet)
B	20A	125%
B	25A	156%
C	10A	104%
C	13A	135%
C	16A	170%
C	20A	208%
C	25A	260%

Wiring

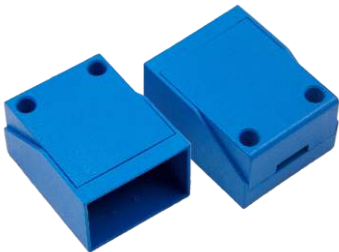
HGV022
HGV048
HGV060
HGV072
HGV070



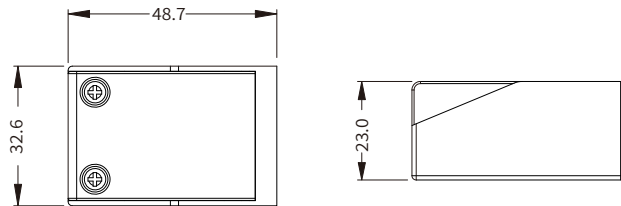
HGV100
HGV150



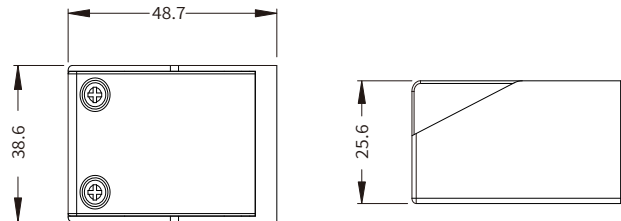
Wiring block size



(Model: BK-AGL003A)



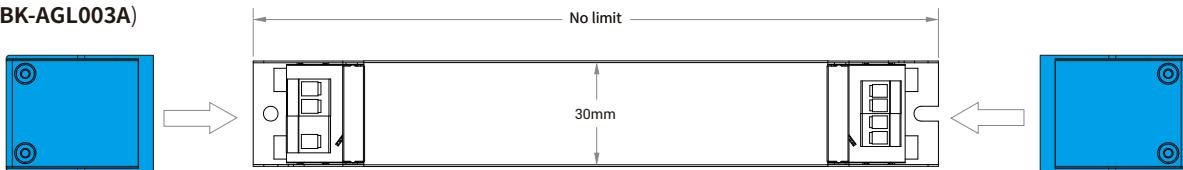
(Model: BK-AGL003B)



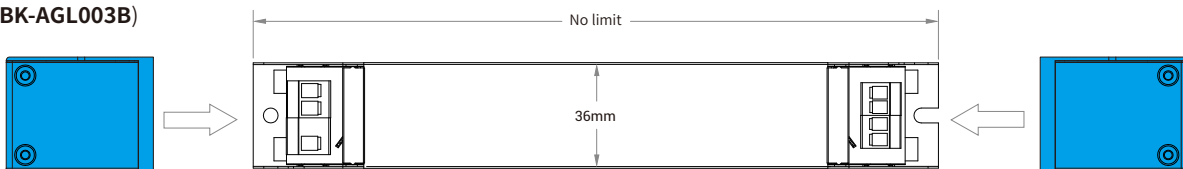
Note: AGL003A suitable for HGV022/HGV048/HGV060/HGV072/HGV070/HGV100
AGL003B suitable for HGV150

Wiring block usage

(Model: BK-AGL003A)

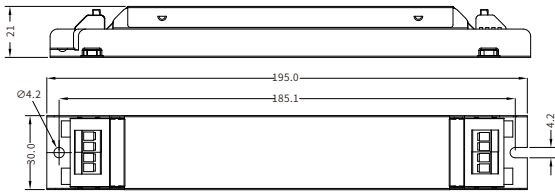


(Model: BK-AGL003B)

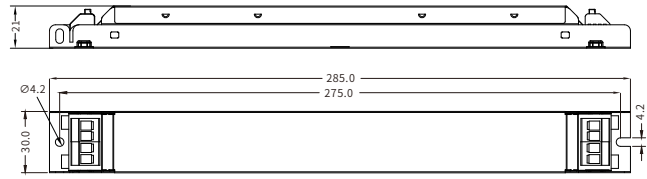


Mechanical Specification

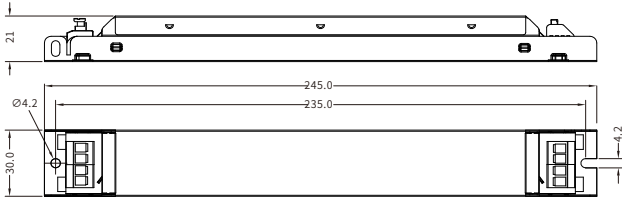
HGV022



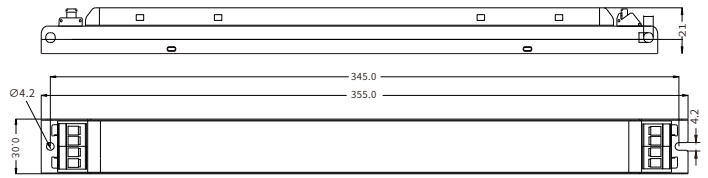
HGV060



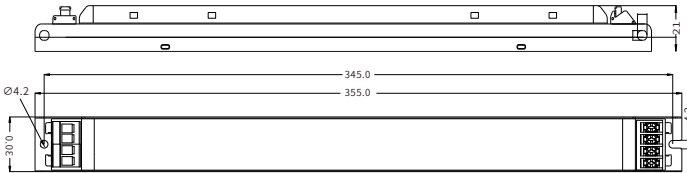
HGV048



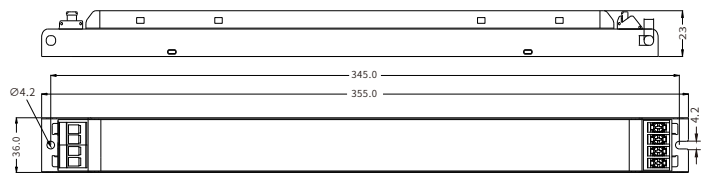
HGV072/HGV070



HGV100



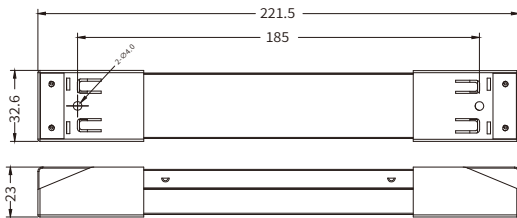
HGV150



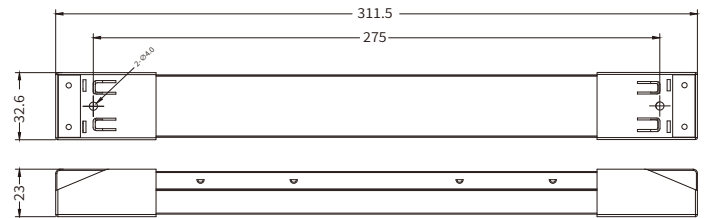
Unit:mm

size(Include accessories)

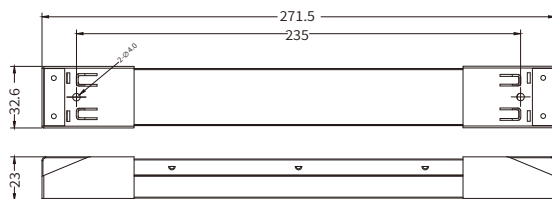
HGV022



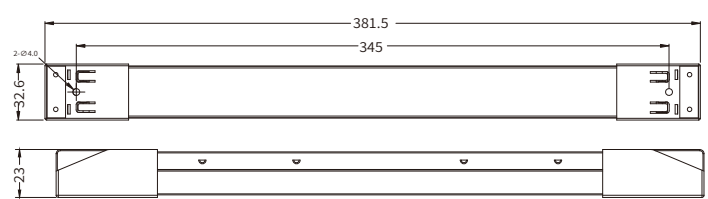
HGV060



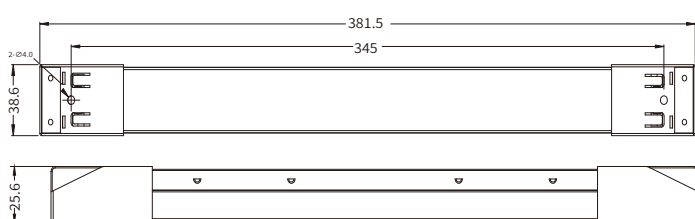
HGV048



HGV072/HGV100/HGV070

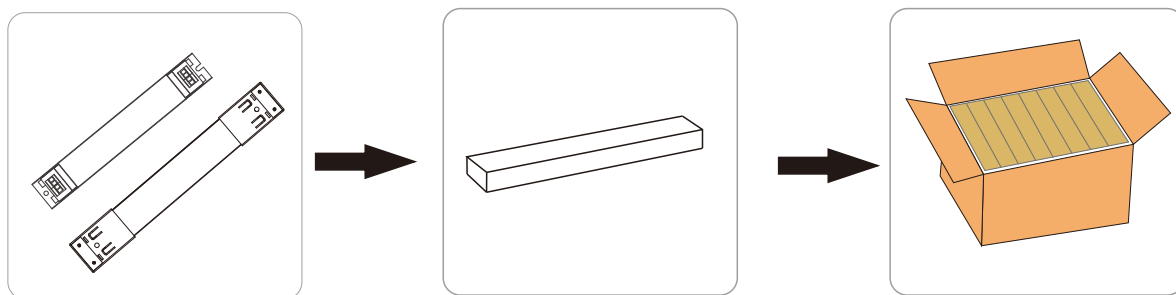


HGV150



Unit:mm

Product package



Product

Packaging

12pcs*4layer=48pcs/CIN
10pcs*5layer=50pcs/CIN
6pcs*6layer=36pcs/CIN
7pcs*5layer=35pcs/CIN
9pcs*3layer=27pcs/CIN

Packaging(Excluding accessories)

Mobel	Product size	Weight	Packaging size	Carton size	Qty/carton	N.W	G.W
HGV022	L221.5*W32.6*H23mm	130g	L268*W38*H26mm	L335*W245*H175mm	48pcs	6.3kg	8.5kg
HGV048	L271.5*W32.6*H23mm	185g	L280*W38*H26mm	L400*W295*H155mm	50pcs	9.3kg	11.2kg
HGV060	L311.5*W32.6*H23mm	215g	L320*W38*H26mm	L335*W245*H175mm	36pcs	7.8kg	9.8kg
HGV072	L381.5*W32.6*H23mm	290g	L390*W38*H26mm	L410*W285*H155mm	35pcs	10.0kg	11.5kg
HGV100	L381.5*W32.6*H23mm	290g	L390*W38*H26mm	L410*W285*H155mm	35pcs	10.0kg	11.5kg
HGV150	L381.5*W38.6*H25.6mm	418g	L390*W43*H30mm	L410*W285*H155mm	27pcs	11.3kg	12.8kg
HGV070	L381.5*W32.6*H23mm	300g	L390*W38*H26mm	L410*W285*H155mm	35pcs	10.5kg	12.0kg

Packaging(Include accessories)

Mobel	Product size	Weight	Packaging size	Carton size	Qty/carton	N.W	G.W
HGV022	L221.5*W32.6*H23mm	150g	L268*W38*H26mm	L335*W245*H175mm	48pcs	7.2kg	9.2kg
HGV048	L271.5*W32.6*H23mm	205g	L280*W38*H26mm	L400*W295*H155mm	50pcs	10.3kg	12.2kg
HGV060	L311.5*W32.6*H23mm	235g	L320*W38*H26mm	L335*W245*H175mm	36pcs	8.5kg	10.5kg
HGV072	L381.5*W32.6*H23mm	310g	L390*W38*H26mm	L410*W285*H155mm	35pcs	10.9kg	12.5kg
HGV100	L381.5*W32.6*H23mm	310g	L390*W38*H26mm	L410*W285*H155mm	35pcs	10.9kg	12.5kg
HGV150	L381.5*W38.6*H25.6mm	440g	L390*W43*H30mm	L410*W285*H155mm	27pcs	11.9kg	13.5kg
HGV070	L381.5*W32.6*H23mm	320g	L390*W38*H26mm	L410*W285*H155mm	35pcs	11.2kg	12.5kg